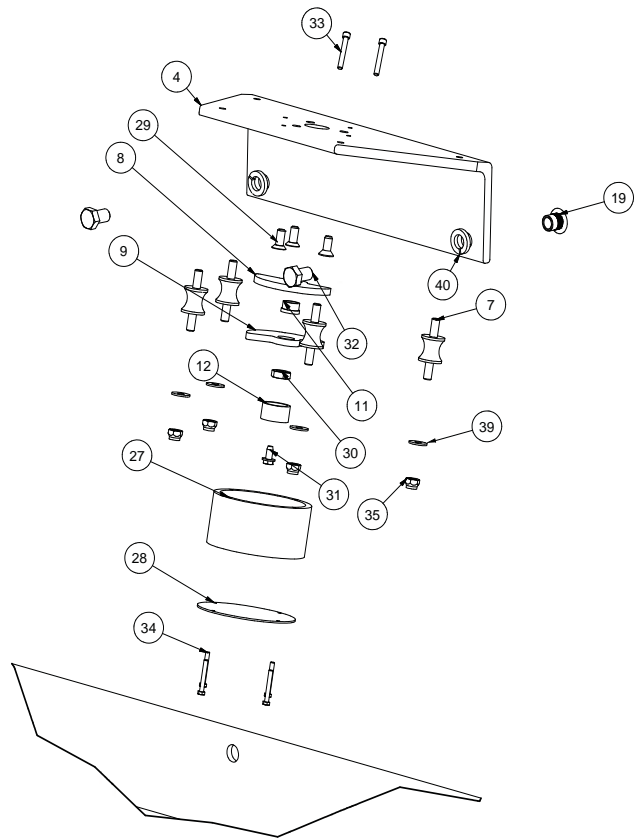


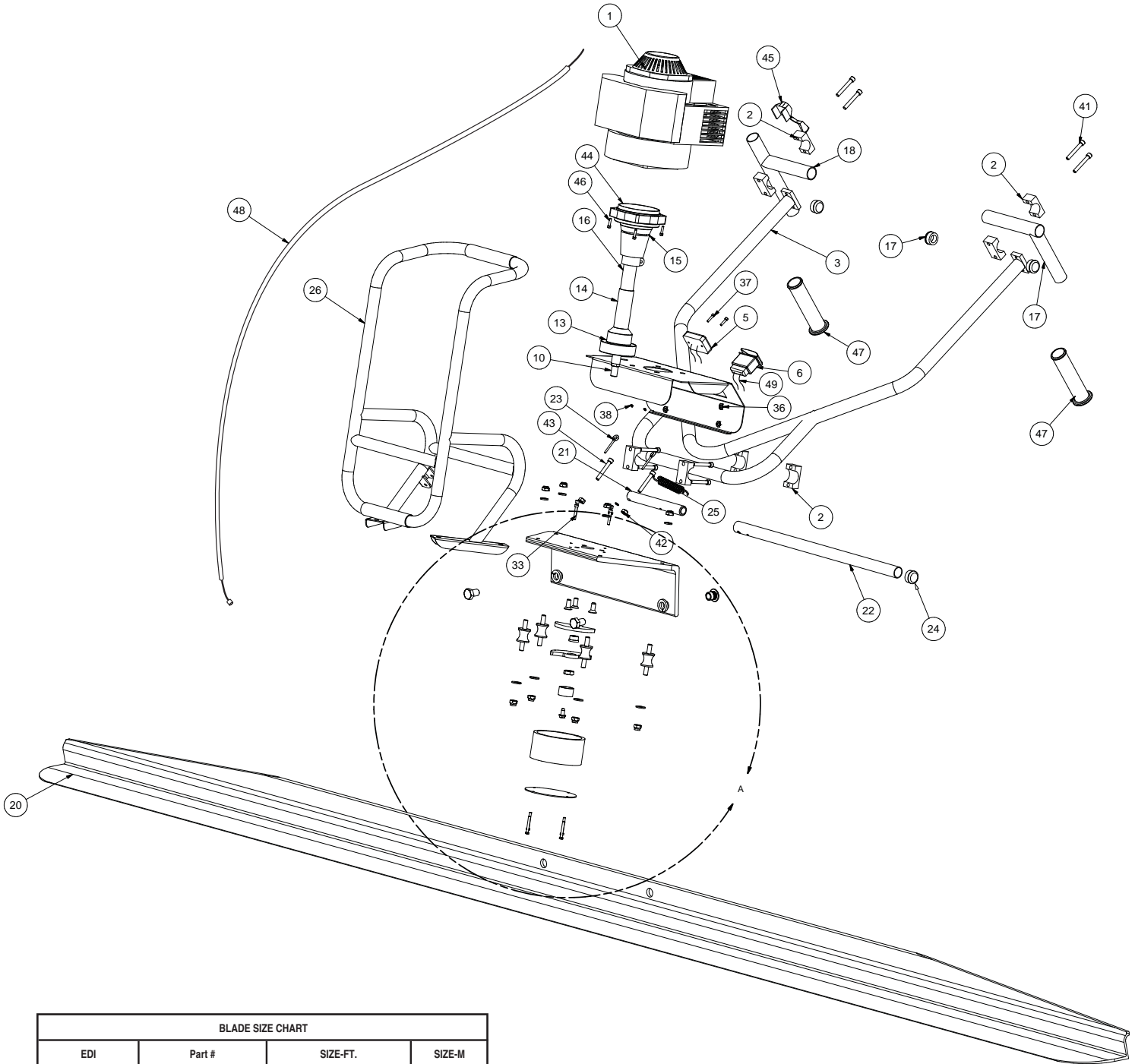
PARTS BREAKDOWN

DET.	QTY.	DESCRIPTION
1	1	GX35 HONDA MOTOR
2	8	HANDLEBAR CLAMP
3	1	HANDLEBAR ASSEMBLY
4	1	BASE EXTRUSION
5	1	TACHOMETER
6	1	KILL SWITCH
7	4	VIBRATION ISOLATOR
8	1	ECCENTRIC WEIGHT #1
9	1	ECCENTRIC WEIGHT #2
10	1	ECCENTRIC SHAFT
11	1	ECCENTRIC WEIGHT BUSHING
12	1	WEIGHT ADJUSTMENT CAP
13	1	LOWER BEARING HOUSING
14	1	COUPLING DRIVE SHAFT
15	1	CLUTCH
16	1	FLEX SHAFT
17	1	HANDLEBARS, L-GRIP
18	1	HANDLEBARS, T-GRIP
19	2	BLADE ATTACHMENT NUT
20	1	BLADE
21	1	KICKSTAND END
22	1	KICKSTAND ARM
23	2	KICKSTAND EYEBOLT
24	1	KICKSTAND END CAP
25	1	SPRING
26	1	FRAME
27	1	ECCENTRIC COVER
28	1	ECCENTRIC COVER CAP
29	3	DRIVETRAIN BASE MOUNTING SCREW
30	1	ECCENTRIC WEIGHT JAM NUT
31	1	ECCENTRIC TIGHTENING CAP BOLT
32	2	BLADE ATTACHMENT BOLT
33	4	ECCENTRIC COVER MOUNTING SCREW
34	4	ECCENTRIC CAP SCREW
35	8	VIBRATION ISOLATOR NUT
36	4	WELD NUT FOR HANDLEBAR CLAMPS
37	2	TACHOMETER MOUNTING SCREW
38	2	TACHOMETER MOUNTING NUT
39	4	VIBRATION ISOLATOR NUT
40	2	BLADE ATTACHMENT LOCK WASHER
41	8	HANDLEBAR CLAMP BOLT
42	2	KICKSTAND NUT
43	2	KICKSTAND BOLT
44	1	REPLACEMENT DRIVESHAFT CORE (NOT PICTURED)
45	1	THROTTLE LEVER (FRICTION STYLE)
46	4	ENGINE MOUNTING BOLTS
47	2	HANDLEBAR GRIPS
48	1	THROTTLE CABLE
49	1	KILL SWITCH WIRING



REPLACEMENT PARTS INDEX			
EDI	PART#	DESCRIPTION	DETAILS INCLUDED
13308	13308	HANDLES WITH GRIPS	17, 18, 47
13309	13309	GRIPS	47
13310	ENG-HONDA	HONDA ENGINE	1, 46
13312	13312	THROTTLE LEVER	45
13313	13313	THROTTLE CABLE	48
13314	13314	HANDLEBARS	3
13315	13315	HANDLEBAR CLAMPS W/HARDWARE	2, 41
13316	13316	HANDLEBAR CLAMP HARDWARE ONLY	41
13317	13317	ON/OFF SWITCH W/WIRES	6, 49
13318	13318	ON/OFF SWITCH WIRES	49
13319	13319	TACHOMETER	5, 37, 38
13320	13320	ECCENTRIC COVER W/HARDWARE	27, 28, 33, 34
13321	13321	KICKSTAND	21, 22, 23, 24, 25, 42, 43
13322	13322	KICKSTAND HARDWARE	23, 25, 42, 43
13323	13323	DRIVE TRAIN	10, 13, 14, 16, 29, 44
13324	13324	CLUTCH	15, 46
13325	13325	VIBRATION DAMPENING KIT	7, 35, 39
13330	13330	ECCENTRIC WEIGHTS & HARDWARE	8, 9, 11, 12, 30, 31
13331	13331	ECCENTRIC WEIGHT HARDWARE ONLY	11, 12, 30, 31
13332	13332	MACHINE BASE	4
13333	13333	BLADE LOCKING HARDWARE	19, 32, 40
13334	13334	DRIVE SHAFT	44
13335	13335	DRIVE SHAFT HOUSING	10, 13, 14, 16
12951	12951	FRAME ONLY	26
12952	12952	ECCENTRIC COVER HARDWARE ONLY	33, 34

PARTS BREAKDOWN



BLADE SIZE CHART			
EDI	Part #	SIZE-FT.	SIZE-M
13336	SWSBLADE4	4	1.2
13281	SWSBLADE6	6	1.8
13283	SWSBLADE8	8	2.4
13284	SWSBLADE10	10	3.0
13287	SWSBLADE12	12	3.7
13290	SWSBLADE14	14	4.3
13291	SWSBLADE16	16	4.9
12950	SWSBLADE16P2	16 (2 sets of mounting holes)	4.9