

RICE HYDRO, INC.
MANUFACTURER'S OPERATING INSTRUCTIONS
DE & RP SERIES MODEL TEST PUMPS

FOR WARRANTY REGISTRATION CALL 800-245-4777.

CONNECTING THE PUMP:

1. Check oil level in engine, use 10W30. Unleaded gasoline.
2. Check oil level in the gear reduction, use (90W). Oil should be level with side drain plug.
3. Connect pressurized water source to the inlet of the pump. *It is recommended that the unit be pressure fed.* For suction or gravity feed locate water within 8 feet, you may need to prime the pump.
4. Connect the supplied high-pressure outlet hose to the pump and your test environment.

OPERATING THE PUMP:

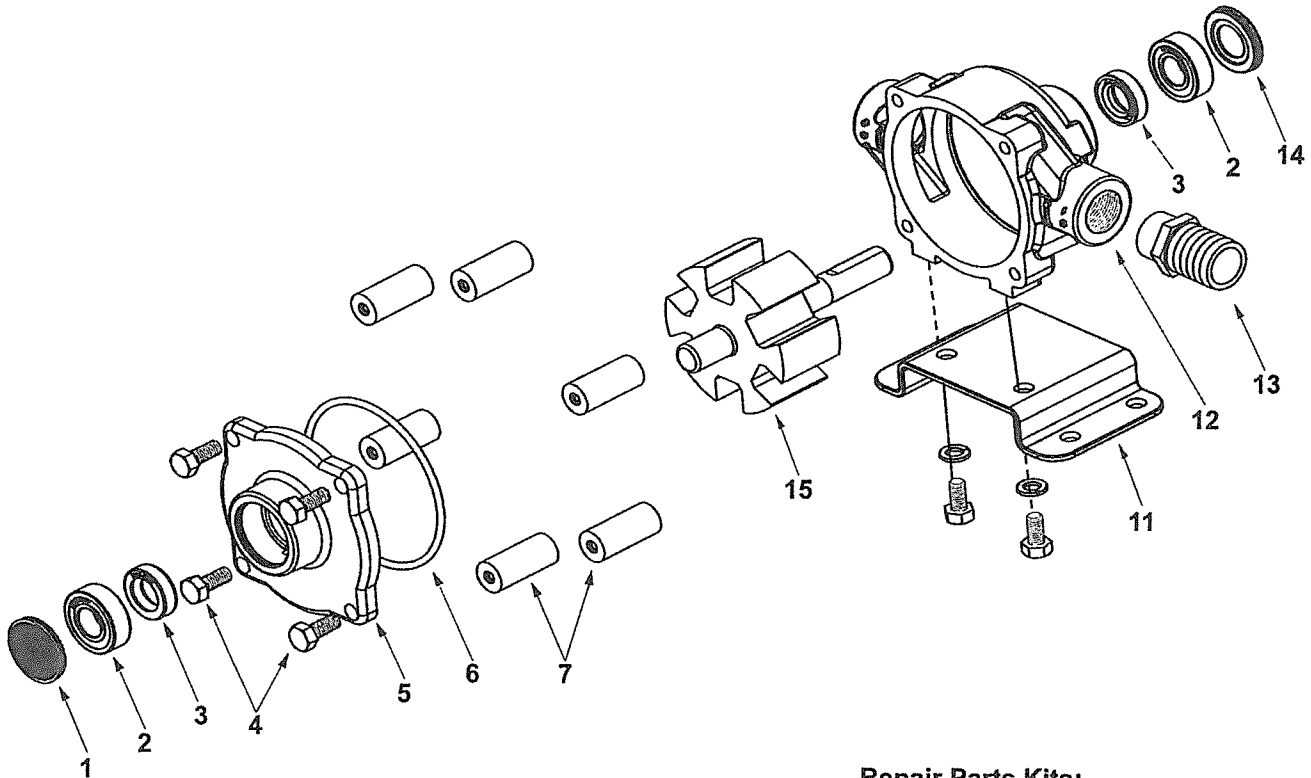
1. Turn the outlet ballvalve to the open position, and start the engine. The engine RPM is preset at the factory, **DO NOT ADJUST.**
2. The pressure regulator has been preset at the factory. ***To change this setting you must make this adjustment while the water is flowing freely, under no pressure.*** To adjust pressure, first loosen the locknut. Turn the T-handle clockwise to increase and counter-clockwise to decrease the pressure. Place a ballvalve or similar open and close valve at the end of the outlet hose, open and close ballvalve to check pressure setting and re-adjust as necessary. It is also recommended that you open and close the hosebib located under the gauge to bleed excess air from piping and ensure accurate pressure readings. Upon reaching desired pressure setting, tighten locknut.
3. With the ballvalve open begin building pressure in test environment. Bleeding air from hosebib under gauge at least once during this process. Once test pressure has been reached, **close ballvalve and shut off engine.**
4. Once the outlet ballvalve is closed and your test begins, you have now isolated the test pump from your test environment, any loss of pressure is due to leaks or trapped air in the line.

REMEMBER THESE CAUTIONS:

1. Check all fluid levels prior to operating pump.
2. Use a sound 3/4" or larger supply hose.
3. DO NOT run dry or pump chlorine through the unit.
4. Protect the pump from freezing, FLUSH with anti-freeze.

RECOMMENDED PERIODIC MAINTENANCE PROCEDURE

1. Change engine oil after the first 5 hours of operation thereafter every 80 hours of use or every season.
2. Change the gear oil after every 250 hours of use or every season.
3. **PISTON PUMPS ONLY** - Lubricate cam bearing with grease (wheel bearing grease) every 100 hours of operation or monthly. Use hand operated grease gun to prevent damage to the bearing seal. Grease fitting assembly is located behind the safety cover on the pump.



IMPORTANT:

When ordering parts, give PART NUMBER and PART DESCRIPTION. Reference Numbers are used ONLY to point out parts in the drawing and are NOT to be used as ordering numbers.

Repair Parts Kits:

No. 3430-0380 Consists of (6) Ref. 7 Super Rollers, (1) Ref. 6 O-ring, and (2) Ref. 3 Viton seals.

No. 3430-0175 Consists of (6) Ref. 7 Polypropylene Rollers, (1) Ref. 6 O-ring, and (2) Ref. 3 Viton seals.

Ref. No.	Qty. Req'd.	Part Number	Description
1	1	2300-0021	Bearing Cover
2	2	2000-0010	Sealed Ball Bearing
3	2	2107-0002	Viton Seal (Standard)
3	2	2102-0001	Buna-N Seal (Optional)
3	2	2102-0001T	Teflon-coated Buna-N Seal (Optional)
4	4	2210-0004	Bolts
5	1	0200-6600C	Endplate (Cast Iron) with Seal
5	1	0200-6600N	Endplate (Ni-Resist) with Seal
5	1	0200-6600X	Endplate (SilverCast) with Seal
6	1	1720-0008	O-ring Gasket for Endplate
7	6	1005-0004	Super Roller (Standard)
7	6	1002-0004	Polypropylene Roller (Optional)
7	6	1055-0004	Teflon Roller (Optional)

Ref. No.	Qty. Req'd.	Part Number	Description
11	1 kit	3420-0023	Base Kit - Sold Separately Includes: (1) Base, (2) Bolts and (2) Washers
12	1	0100-6600C	Body (Cast Iron) with Seal
12	1	0100-6600N	Body (Ni-Resist) with Seal
12	1	0100-6600X	Body (SilverCast) with Seal
13	1	2404-0052	1" Hose Barb
14	1	2300-0023	Shaft Bearing Cover
15	1	0300-6600C	Rotor Assembly (Cast Iron)
15	1	3430-0767	Rotor Assembly (Std. Ni-Resist & XL)

PARTS BREAKDOWN FOR MODEL RP(H)-2C
RICE HYDRO INC.

REF#	PART NUMBER	DESCRIPTION	QTY REQ'D
1	HYPRO-2300-0021	BEARING COVER	1
2	HYPRO-2000-0010	SEALED BALL BEARING	2
3	HYPRO-2107-0002	VITON SEAL STANDARD	2
4	HYPRO-2210-0004	BOLTS	4
5	HYPRO-0200-6600N	END PLATE NI-RESIST W/SEAL	1
6	HYPRO-1720-0008	O-RING GASKET FOR ENDPLATE	1
7	HYPRO-1002-0004	POLYPROPYLENE ROLLER	6
11	HYPRO-3420-0023	(1) BASE, (2) BOLTS, (2) WASHERS	1
12	HYPRO-0100-6600N	BODY NI-RESIST WITH SEAL	1
14	HYPRO-2300-0023	SHAFT BEARING COVER	1
15	HYPRO-3430-0767	ROTOR ASSEMBLY (NI-RESIST)	1

NA	BRIGG-126352-0049-E2	5.5 HP 206 CC ENGINE W/GR
NA	HONDA-GX160UT2-HX2	5.5 HP 163 CC ENGINE W/GR
NA	GAUGE-600	0-600 PSI LIQUID FILLED 2&1/2"
NA	HOSE-3/4X8-RH	HIGH PRESSURE OUTLET ASSEMBLY
NA	FITTING-3/4-MPIPE	HOSE, MALE PIPE RIGID END
NA	FITTING-3/4-MPX	HOSE, MALE PIPE SWIVEL END
NA	HOSE-3/4-1250XFT	CUSTOMER TO SPECIFY LENGTH
NA	CENTERDISK-LVJ-AUGER	BUNA INSERT SPIDER DISC
NA	COUPLING-LVJ-5/8	5/8" COUPLING (PUMP SIDE)
NA	COUPLING-LVJ-3/4	3/4" COUPLING (ENGINE SIDE)
NA	LINESTRAINER-3/4	COMPLETE LINESTRAINER ASSEMBLY
NA	HYPRO-6500N-RT3	ROLLER PUMP 5 GPM UP TO 300 PSI
NA	SPRAY-6815-300-3/4	70-300 PSI T-HANDLE REGULATOR
NA	BALLVALVE-3/4	3/4" FXF 1/4 TURN BALLVALVE
NA	SWIVEL-3/4	3/4" FEMALE INLET HOSE SWIVEL
NA	HOSEWASHER-3/4	3/4" HOSE WASHER
NA	KING-LARGE	BOX STANDARD SIZED UNITS
NA	COUPLERBODY-3/4	FEMALE CONNECT TO OUTLET HOSE
NA	COUPLERPLUG-3/4	MALE PUMP OUTLET PIPING
KIT	HYPRO-3430-0175	ROLLER REPAIR KIT: (6) 1002-0004 POLYPROPYLENE ROLLERS (1) 1720-0008 O-RING GASKET FOR END PLATE (2) 2107-0002 VITON SEALS
KIT	SPRAY-AB6815-300	PRESSURE REGULATOR REPAIR KIT

PRICES SUBJECT TO CHANGE WITHOUT NOTICE

REV.DATE 09/01/14